
*Supported Life Institute
and
SCDD - Sacramento Office
present our:*

30th Annual Conference

SUPPORTED LIFE

2016



“Inclusion Is The New Standard”

*Empowering All People
with Developmental Disabilities
to be Fully Included in the Community*

Oct. 6 – 7, 2016

**Crowne Plaza Hotel
Sacramento Northeast
Sacramento, CA**

“A Place to Train Your Staff
~ in an Inclusive Environment”

Supported Life 2016 “Inclusion is the New Standard” Keynote Speakers

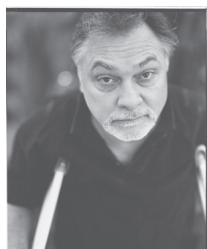
Stories of Inclusion - Featured Speakers

As we enter an era where Inclusion is not just a Hope but an Expectation, let's listen Thursday morning to the Stories of three Self-Advocates as they tell us about Their Lives and their perspectives on Inclusion.



Chantal Sicile-Kira This San Diego parent, our Thursday afternoon Keynote, has a passion for empowering others which has led her to become an award-winning author of five books & to offer information online via AutismCollege.com. She is an international speaker/trainer/consultant; & a leader in fields of autism; adolescence; transition to adulthood; & autism & the family.

Laura Brackin Joining us from Louisiana, Dr. Brackin is a leader in the disability field, including through local, state, national nonprofit, university, governmental and association positions. Through keynote & session, she will help Service Agency staff, families, & self-advocates understand how to transition toward inclusion & integrated employment opportunities spurred by new federal CMS Settings Rule.



Shawn Casey O'Brien

This grassroots organizer, author, & founder of “Up” – the “Unique People’s Voting Project” which registered countless Voters, especially Voters with Disabilities, insists that registering to Vote AND Voting is key to making a difference in the world, for ALL - those with disabilities AND the “Temporarily Able-Bodied” - our “enlightened self-interests are the SAME.

Conference Partners



Early Co-Sponsors (Initial List)

ARC - Taft
Cal-TASH
Central Valley Training Center
CHOICES
Connections For Life
Employment Enterprises
George F. Kelso Foundation
Ray Morgan Company
Summer House Inc.
The ARC of San Diego
Ukiah Valley Assoc. for Habilitation
Clair and Tiffany Urness
Work Training Center

Early Exhibitors (Initial List)

Talk To Me Technologies
DDS Safety Net
Hamilton Relay
Premier Healthcare Services
QuickSolve Plus
Saltillo Corporation
Special Considerations

Conference Planning Team

CDCAN (CA Disability Community Action Netwk)
CES (Community & Employment Services)
Connections For Life
Crunchy Corrales
Disability Rights California / OCRA
FRCNCA (Fam Resc Ctrs Netwk of CA)
NorthStar Services
PACE Solano
Sacramento City Unified School District
Sacramento County Office of Education
SCDD - Sacramento Office
South Area People First
The Arc of California

Conference Registration

Register Online (supportedlife.org) OR Use This Form

Complete form & mail w/ payment to Supported Life Institute. Copy & send separate reg. form for each applicant. (PRINT CLEARLY : -)

1. _____
Name
2. _____
Affiliation/Agency
3. _____
Address
4. _____
City, State, Zip Code
5. _____
Area Code and Daytime Telephone Number
6. _____
Email
7. Are you a: ☐ Professional ☐ Person with a Disability
☐ Family Member ☐ Other _____
8. Will you attend: ☐ Both Days ☐ Thurs Only ☐ Friday Only
9. Registration fees enclosed: \$ _____
10. Accommodations requested:
☐ Medically-recommended diet ☐ Vegetarian lunch preferred
☐ Sign language ☐ Alternative format (Braille, large print, pdf)
Please Specify Request (note: all requests for accommodations must be received at the Supported Life Institute by September 15, 2016):

11. Please circle your preliminary choices of which concurrent sessions you are interested in attending (one choice per session time). You are still free to attend any session you wish at the conference.

T	1A	1B	1C	1D	1E	1F	F	4A	4B	4C	4D	4E	4F
H	2A	2B	2C	2D	2E	2F	R	5A	5B	5C	5D	5E	5F
U							I	6A	6B	6C	6D	6E	6F
R	3A	3B	3C	3D	3E	3F							

12. Mail this form, plus check or money order payable to:
(sorry, credit cards only accepted online)

“Supported Life Institute”
1010 Hurley Way, Suite 180
Sacramento, CA 95825

916-567-1974 info@supportedlife.org

Registration Information

Thanks to the generous support of the Supported Life 2016 co-sponsors, we are pleased to offer a significantly reduced registration fee for people with disabilities and family members who wish to attend the conference.

We do ask people with disabilities & their family members who work in the disabilities field to request that their agency pay the Regular registration fee, to maximize our cosponsors' generosity.

<u>Conference registration includes:</u>		EARLY Registration	LATE Registration
- Lunch Thursday & Friday - Thurs. Evening Reception		By Sept 9th	On-Site or After Sept 9th
Conference Regular Fee	2 days	\$285	\$305
Professionals	1 day only	\$225	\$255
Conference Reduced Fee	2 days	\$205	\$240
People w/ Dev. Disabilities & Family members	1 day only	\$155	\$175



**Want to Use Your
Credit Card?**

Register Online:
www.supportedlife.org

Regional Center Vendor Codes

**P63905 (svc code 102) =
Supported Life Inst.
CONFERENCE Reg. Fee**

**ZA4775 (svc code 022) =
Crowne Plaza
HOTEL Lodging**

Refund Policy

- Cancellations must be in writing & received by 9/9/16.
- All cancellations subject to a 50% administrative fee.
- Cancellations after 9/9/16 (Including “No Shows”) Cannot be refunded
- With advance notice, substitutions are welcome.

Volume Discount !

Register 5 at professional rate & receive a 6th registrant FREE.

**All Group Registrations
Must Be Received Together**

Hotel Accommodations

Crowne Plaza Hotel
5321 Date Ave.
Sacramento, CA 95841
(916) 338-5800



**BE in the
CENTER
of Things**

A special rate of \$112 per night + tax is available for Supported Life Conference attendees. Hotel rate includes hot breakfast buffet for up to 4 occupants.

- **Reservations:** call **Crowne Plaza Hotel** directly **916-338-5800** & refer to **“Supported Life Conference.”**
- To ensure receipt of this special rate, make reservations before **Sept. 26, 2016.**
- There is plenty of **Free Parking** at the hotel.
- **Super Shuttle** provides Airport shuttle service to the hotel. Call them for fees (800) 258-3826.



Supported Life Conference:
*Professionals, Families, and Self-advocates
coming Together to
Learn about Supports for people to be
Fully Included in the community...*



Communi-
cation /AAC



Employ-
ment



Family
Supports
/ Transition



Health &
Wellness



Living /
Community



Personal
Power &
Rights



Policy &
Legislation



Organizational /
Staff Development



Schools

Thursday October 6, 2016

- 7:45 – 9:10 Registration**
7:45 – 9:10 Exhibit Hall Preview
9:10 – 10:05 Welcome / Keynote Address
 Stories of Inclusion
10:15 – 11:25 Concurrent Sessions 1A - 1F



1A Systems Change: Competitive Integrated Employment. Carole Watilo, *Progressive Employment, Citrus Heights*



1B Home Accessibility/Aging in Place. Steve Weaver, *EASE—Eagle Accessibility Solutions & Equipment, Auburn*



1C Reframing how we look at Disability and the lessons Disability can teach us. Chris Miller, *Redwood Coast Regional Center, Eureka*



1D Role of Whole Community in Preparing for Disasters. L. Vance Taylor, *CA Gov. Ofc of Emergency Svcs (Cal OES), Mather*



1E Special Needs Trust as an Advocacy Tool. Stephen Dale, *The Dale Law Firm, Pacheco*



1F Supporting AAC Learners to Use Their Communication Systems. Kristen Carroll, *CTEC / SLI, Sacramento (SLP CEUs)*

11:35 – 1:45 Luncheon / Keynote Address
Chantal Sicile-Kira
 Love, Sex, God & Autism

1:45 - 2:30 Exhibit Hall Spotlight
 (play Vendor Passport Game - participate for Bonus Prize: to be drawn in eve Info Faire)

2:30 – 3:40 Concurrent Sessions 2A - 2F



2A Our Journey of Becoming Empowered Employees. Robert Levy, *Progressive Employment Concepts, Orangevale*



2B Living Life to the Fullest Over 40 and Beyond! Beverley Legault, *Creative Support Alternatives, Murphys*



2C Californians for SSI & the California Cash-out Policy. Chris Jensen, *Resources for Independent Living, Sacramento*



2D Integrating Access & Functional Needs into Emergency Evacuation Plans. L. Vance Taylor, *Cal OES - Chief, Office of Access & Functional Needs, Mather*



2E Getting Around Your Community and Making Friends Bill Allen, *DDS SafetyNet, San Francisco*



2F Apps for Communication. Kristen Carroll, *CTEC / SLI, Sacramento (SLP CEUs)*

**NOTE: Exhibit Hall all day
BUT Thurs Only !)**

3:50 – 5:00 Concurrent Sessions 3A - 3F

5:45 – 7:30 Reception & Information Faire
 Light Refreshments Additional Info Tables,
 DJ/Music, Raffle/Bonus Passport Drawings...



3A Preparing for the Real World of Work. Chantal Sicile-Kira, *Founder, Autism College.com, San Diego*



3B Aging With a Developmental Disability. Lanita Henderson, *Parents and Friends Inc., Fort Bragg*



3C Major Changes Coming Impacting You And Your Community. Marty Omoto, *CDCAN (CA Disability-Senior Community Action Network), Sacramento*



3D How Do We Support The Supporters? Mary Ellen Sousa, *Creative Support Alternatives, San Andreas*



3E The ABLE Act: Where do we go from Here? Stephen Dale, *The Dale Law Firm, Pacheco*



3F Aided Language Input for Communication Support. Kristen Carroll, *CTEC / SLI, Sacramento (SLP CEUs)*



Communi-
cation /AAC



Employ-
ment



Family
Supports
/ Transition



Health &
Wellness



Living /
Community



Personal
Power &
Rights



Policy &
Legislation



Relation-
ships



Schools

Friday October 7, 2016

8:00 – 9:00 Registration

9:00 – 9:50 Welcome / Keynote Address

Laura Brackin (sponsored by The Arc of CA)

Employment & Person-Centered
Planning in Meeting CMS Rules

10:00 – 11:10 Concurrent Sessions 4A - 4F



4A Competitive Integrated Employment. Denyse Curtright, *CA Department of Developmental Services, Sacramento*



4B An Update on POS Disparities in Regional Centers. Barbara Wheeler, *USC UCEDD, Los Angeles*



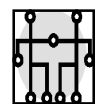
4C Developmental Centers: Transitions and Transformations. Catherine McCoy, *CA Department of Developmental Services, Sacramento*



4D From LABEL to ABLE. Isabel Duncanwood *Voices Unleashed, Redding*



4E Inclusion for Sabrina - One Child's Journey. Nelia Nunes, *Parent Advocate, Folsom*



4F The BFF (Best Friends Forever) Project. Trudy Grable, *Journey of Choice & Parents Helping Parents, Inc., Saratoga*

11:20 – 1:10 Luncheon / Keynote Address

Shawn Casey O'Brien

How 40 Million Adults w/ Disabilities
(&Those Who Support Them) Can Save Democracy

1:10 – 1:30 Mini-Sessions

1:35 – 2:45 Concurrent Sessions 5A - 5F



5A "Making the Transition": From Student to Employee. Ben Praker, *InAlliance, Placerville*



5B Life After Death: Carrying on After Losing a Loved One. Steve Weaver, *EASE—Eagle Accessibility Solutions & Equipment, Auburn*



5C CMS Settings Rule: How Can My Agency Move Toward Inclusion? Laura Brackin, *Brackin & Associates, Louisiana*



5D Emergency Preparedness - What to Know! Sonya Bingaman, *SCDD - Sac. Office, Sacramento*



5E Multi-cultural collaborations to improve access to special education. Irene Martinez, *Fiesta Educativa Inc., Los Angeles*



5F Artful, Effortless & Empowering AAC w/QuickSteps Language Suite. *Talk To Me Technologies, Cedar Falls, Iowa (SLP CEUs)*

2:55 – 4:00 Concurrent Sessions 6A - 6F

4:00 Conference Concludes

SLPs:

CEUs Available

See website for details:
www.supportedlife.org



6A Work Pays. Mayra Fernandez, *Crossroads Diversified Services, Inc., Sacramento*



6B "Blocking the Punches" Personal Safety Training. Jane Singer, *Blocking The Punches, Venice, CA*



6C Self-Determination - Is it right for you? Sonya Bingaman, *SCDD - Sac. Office, Sacramento*



6D 'Inclusion is the New Standard': My Story. Joe Delgado, *Disability Resource Agency for Independent Living, Sonora*



6E Operation Sister: The Sibling Advocacy Experience. Mariko Peshon, *Sibling & Special Education Professional, South Lake Tahoe*



6F Video Supported Communication Systems. Jamie Crum, *CTEC / SLI, Sacramento (SLP CEUs)*

For Full Description of Sessions ...

... please check our website soon ...

... www.supportedlife.org ...